



# RECRUITMENT PACK

**HOLIDAY CAMP  
LEADER/ASSISTANT**

CHARITY NUMBER: 1175899

# WHO WE ARE

Move More is an innovative, vibrant organisation; we pride ourselves on being able to make a positive difference to the lives of children and their families through sport and physical activity. Our vision is 'Every Child Active' as we want all children to experience the physical and mental benefits of a physically active lifestyle.

We are a Charitable Incorporated Organisation (CIO) that works across Cheltenham and Tewkesbury and wider across Gloucestershire and South Worcestershire. The organisation has gone through a period of growth over the past 5 years and in a typical year would work with 23,000 children and over 700 teachers.

# WHAT WE DO

## EDUCATION & SUPPORT

Our qualified teachers and coaches provide professional development opportunities through conferences, teacher training, school inset days, team teaching and showcasing best practice. This enables professionals to feel confident delivering high quality physical activity, PE and school sport.

## PARTICIPATION

We pride ourselves on offering a breadth of opportunities for every child. We engage children with different abilities, motivations and backgrounds, inclusive of those with specific needs, disabilities or sedentary behaviours. Through our festivals and competitions, extra-curricular provision and holiday camps we provide children with the opportunity to be active outside of the school environment

## HEALTH & FAMILIES

We use physical activity to achieve wider health outcomes for children and their families. We work with individual children and small groups, to improve knowledge, understanding, motivation and confidence, helping them make healthier life choices. Our work with families supports parents and carers, giving advice, skills and opportunities to enhance physical activity, diet and wider areas such as sleep, screen time and mental wellbeing.

# OUR VALUES

**Innovative** – We are creative, forward-thinking and not afraid to try something new

**Open** – We foster a culture that is inclusive and welcome new partnerships

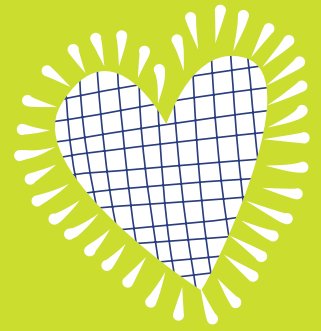
**Quality** – We are committed to achieving positive outcomes and impact for children

**Responsive** - We listen and make changes based on need and insight

**Fun** – We enjoy what we do and ensure we create a positive, happy experience for everyone

# THE CHALLENGE

Across Cheltenham and Tewkesbury less than **1 in 5** children are achieving the Chief Medical Officer guidelines of 60+ minutes of physical activity every day.



Within England, Cheltenham and Tewkesbury are ranked **130** and **97** respectively, for children achieving 60 active minutes each day (out of a 269 local authorities where data was available).

Ref: Sport England Active Lives Survey Children & Young People



Almost **1 in 4** children across Gloucestershire are classified as overweight or obese.

The most deprived areas of Cheltenham have some of the highest obesity rates across the county. In one area, over **1/3** of year 6 children are overweight (38%).



Across Cheltenham and Tewkesbury, **obesity** levels vary from 4.5% of children in reception, through to 23.2% in year 6.

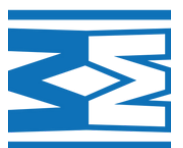
Ref: NCMP dataset

**1 in 18** preschool children have a mental health condition

**1 in 8** young people aged 5-19 have a mental health condition

Emotional health issues' in children aged 5-15 are **increasing**

Ref: NHS Digital & Government Statistical Service



# JOB INFORMATION

**Post:** Holiday Camp Leader/Assistant

**Wage:** £10-17.50 per hour

**Hours:** Full-time/part time during school holidays

**Reports to:** Head of Education.

**Contract:** Casual

We are seeking to recruit into our team during school holidays. Our multi sport and early years camps are for children from 3 -12 years of age and have a focus on children being active. This is an exciting new opportunity for the right candidates with the potential that this could be extended into term time work also.

We are looking for people that share Move More's values and goals, to help us grow and prosper, to make a positive contribution to children's health and wellbeing across Cheltenham, Tewkesbury and wider across Gloucestershire and South Worcestershire.

## JOB DESCRIPTION

### PURPOSE

- To improve children's experience and knowledge of health, physical activity, sport and physical education through the delivery of high quality provision.

### MAIN DUTIES

- To plan, organise and deliver high quality sessions during holiday camps.
- To manage the daily administration associated with running the camp, i.e. registration, medical forms, incident forms etc (camp leaders).
- To lead the camp and manage the camp including the direction and management of other staff members (camp leaders).
- To effectively supervise children abiding by Move More's health & safety and Child Protection & Safeguarding policies, procedures and guidelines.
- To support children with self care where appropriate.
- As a team and independently, (when appropriate), be responsible for the setting up and closure of camps, facilitating tasks and activities, caring for the children's overall health and well being needs
- To liaise and communicate effectively with the children's' parents and carers where appropriate.
- To actively promote the work and public image of the charity, by always maintaining high standards of personal appearance and adopting a friendly, professional approach to the public.
- To undertake other duties, as specified by the Head of Education or a member of the Senior Management, which are appropriate to the level and general responsibilities of the post.

# PERSONAL SPECIFICATION

## KNOWLEDGE AND UNDERSTANDING

- A clear vision and understanding of how physical activity, PE and school sport positively impact the development of healthy lives for young people.
- A confident and proficient sports coach across many different sports/activities.
- Sound knowledge and understanding of child development, health factors and how to share key, child centred messages through fun and engaging programmes.
- Knowledge of disability sport and inclusion strategies to promote the involvement in physical activity, PE and sport to all.

## EXPERIENCE

- Experience of working with primary aged children
- Experience of working across a range of different sports and physical activities.

## QUALIFICATIONS

- A Minimum Level 2 NGB Coaching Award.
- A sports related degree or teaching qualification would be preferable.
- Possible courses attended e.g. Safeguarding & Child Protection, Pediatric First Aid.
- Evidence of professional development relevant to the role.
- Current driving license (use of own transport).

## SKILLS AND ATTRIBUTES

- Have a passion for the job, for working with mainly primary aged children and a drive for excellence.
- Highly motivated, able to demonstrate excellent communication and interpersonal skills that can be adapted to best suit a range of needs and audiences.
- Strong organisational skills with the ability to prioritise and meet conflicting deadlines.
- To be flexible, creative and innovative in overcoming barriers for positive change.
- The ability to create positive working relationships with a large range of professionals, organisations & individuals.
- The ability to work independently or as part of a team.
- An ability to work in partnership, delivering high quality, front line services that are flexible and responsive to need and change.
- The ability to demonstrate the desire and passion to make a real difference to the lives and life-chances of children and young people, linking their school with their families.

## HOW DO I APPLY?

**TO APPLY PLEASE DOWNLOAD A MOVE MORE APPLICATION FORM FROM  
[HTTPS://WWW.MOVE-MORE.ORG/GET-INVOLVED/VACANCIES/](https://www.move-more.org/get-involved/vacancies/)  
(PLEASE NOTE CV'S WILL NOT BE ACCEPTED)**

**PLEASE EMAIL YOUR COMPLETED APPLICATION TO:  
MAIJA BROWN, OPERATIONS AND MARKETING CO-ORDINATOR -  
MAIJA@MOVE-MORE.ORG**